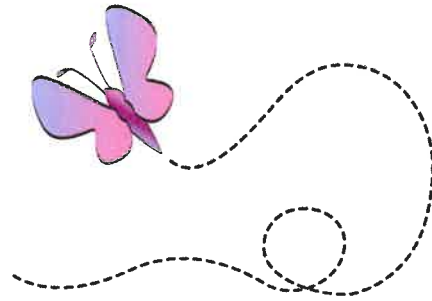


HERE'S WHAT HAPPENING AT FORT CHERRY ELEMENTARY IN APRIL:

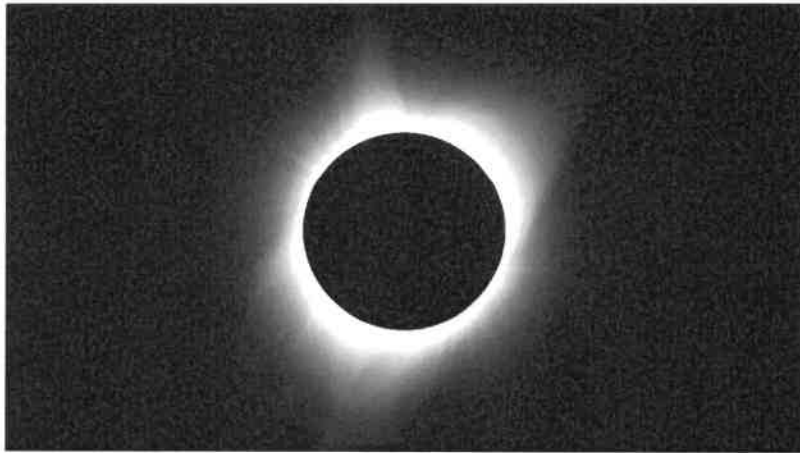


- 4/1-3 Easter Break
- 4/3 Teacher In-Service Day
- 4/4 Report Card Day
- 4/8 Eclipse 2-hour early release (1:25 p.m.)
- 4/17 Helping Hands Pick Up 12-2 p.m.
- 4/19 Space Assembly for students
- 4/22 School Board Meeting
- 4/23-25 ELA PSSA Testing (grades 3-6)
- 4/30-5/2 PSSA Math Testing starts (grades 3-6)



Just a reminder.....

**There is a 2 hour early dismissal
on April 8th due to the
solar eclipse.**



**Buses will start loading at 1:25.
Students not riding the bus will be
dismissed at 1:35.**

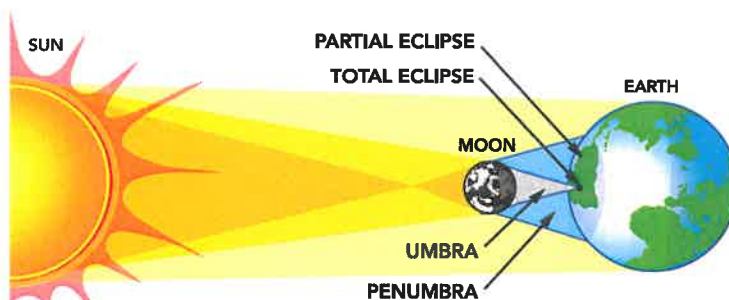


Experience a Solar Eclipse



Credit: S. Habbal, M. Druckmuller and P. Aniol

TOTAL SOLAR ECLIPSE



Not to scale: If drawn to scale, the Moon would be 30 Earth diameters away from Earth. The Sun would be 400 times that distance.



Credit: Rick Fienberg, TravelQuest International and Wilderness Travel

In this series of stills from 2013, the eclipse sequence runs from right to left. The center image shows totality; on either side are the 2nd contact (right) and 3rd contact (left) diamond rings that mark the beginning and end of totality respectively.

WHAT IS A SOLAR ECLIPSE?

A solar eclipse happens when the Moon moves between the Sun and Earth, casting a shadow on Earth, fully or partially blocking the Sun's light in some areas. There are different types of solar eclipses.

Total Solar Eclipse

For a total eclipse to take place, the Sun, Moon, and Earth must be in a direct line. The people who see the total eclipse are in the center of the Moon's shadow when it hits Earth. The sky will become very dark, as if it were night. Weather permitting, people in the path of a total solar eclipse can see the Sun's corona, the outer atmosphere of the Sun. A total solar eclipse is the only type of solar eclipse where viewers can watch without their eclipse glasses – and they can only remove them when the Moon is completely blocking the Sun.

Annular Solar Eclipse

An annular eclipse happens when the Moon is lined up between the Sun and Earth, but at its farthest point from Earth. Because the Moon is farther away from Earth, it seems smaller. It does not block the entire view of the Sun. The Moon in front of the Sun will look like a dark disk on top of a larger, bright disk. This creates what looks like a ring around the Moon.

Known as a hybrid eclipse, sometimes an eclipse can shift between annular and total as the Moon's shadow moves across Earth's surface.

Partial Solar Eclipse

This happens when the Sun, Moon and Earth are not exactly lined up. The Sun will appear to have a dark shadow on only part of its surface. During a total or annular solar eclipse, people outside the Moon's inner shadow see a partial solar eclipse.



Credit: Marla Hladiuk



WHERE TO WATCH

Find a nice, clear spot with a good view of the sky.



HOW TO WATCH

You can see the Sun and an eclipse with special eclipse or solar viewing glasses. NEVER look directly at the Sun without appropriate eyewear. Regular sunglasses are not safe to view an eclipse. <https://go.nasa.gov/342otvS>



HOW LONG WILL IT LAST

A total eclipse, when the Sun is completely blocked by the Moon, will last up to a few minutes, depending on your location.

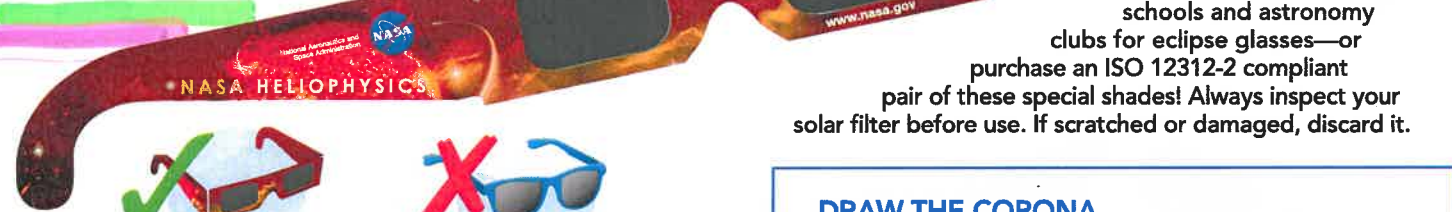


Credit: International Space Station

This photo taken from the International Space Station shows the Moon's umbra, or inner, shadow during the total solar eclipse of March 29, 2006.

SAFELY observing THE SUN

WARNING! Never look directly at the Sun without proper eye protection. You can *seriously* injure your eyes.



Check with local science museums, schools and astronomy clubs for eclipse glasses—or purchase an ISO 12312-2 compliant pair of these special shades! Always inspect your solar filter before use. If scratched or damaged, discard it.



View the eclipse with special eclipse glasses.



Regular sunglasses are not safe to view the eclipse.

BUILD A SOLAR VIEWER

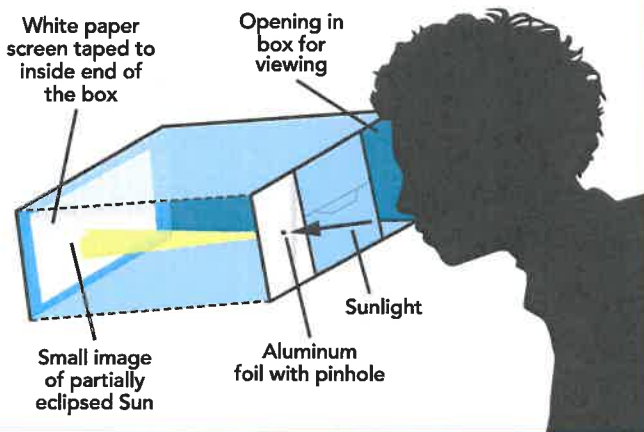
Create an inexpensive but functional, safe solar viewer with just plywood, lenses, rubber bands, paper and popsicle sticks! <https://go.nasa.gov/3yxoA0T>

MAKE YOUR OWN ECLIPSE PROJECTOR

You can make this simple eclipse projector with almost any cardboard box, paper, tape and foil.

The longer the distance from the pinhole to screen, the larger the image of the Sun will be.

NEVER look directly at the Sun without appropriate eyewear.



ECLIPSES IN THE UNITED STATES: The next solar eclipses that cross the United States are on Saturday, October 14, 2023 (Annular Solar Eclipse) and Monday, April 8, 2024 (Total Solar Eclipse).

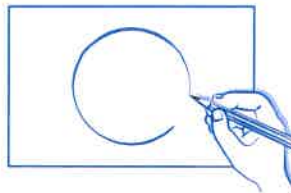
For more on eclipses: <http://www.nasa.gov/eclipse>

This product is supported by NASA under cooperative agreement number NNH15ZDA004C.

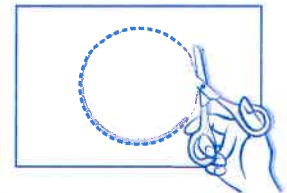
DRAW THE CORONA

Long before there were cameras or telescopes, eclipse watchers recorded what they saw in the sky in words, drawings, and paintings. You can have fun creating your own picture of a solar eclipse with chalk and paper! You can do this activity before an eclipse to predict what you'll see, or after to record what you saw.

First, trace a large circle template on stiff paper.



Carefully cut out the circle.



Place the template on dark paper and hold or tape it down. Draw a thick circle or lines of chalk around the template a few times — it doesn't need to be neat!



Holding the template in place, smudge the chalk away from the center of the circle using a finger to create the corona of the Sun.



When you are done smudging, remove the circle template and add words, pictures, or fun designs.



You've made total solar eclipse art!



The whole family can get involved in learning about eclipses! Morgan (age 5) and Chelsea (age 2) drew these dazzling coronas.



www.insideoutcookie.com

Fort Cherry Elementary PTO

Help us earn money with this **EASY** and **DELICIOUS** fundraiser!

Student Name: _____

Phone #: _____

**Strawberry
Cheesecake** **Quantity** _____

**Smores Stuffed
Chocolate Chip** **Quantity** _____

**Brookie
Monster** **Quantity** _____

**Salted Caramel
Chocolate Chip** **Quantity** _____

**GF/DFriendly
Chocolate Chip** **Quantity** _____

**Ultimate
Peanut Butter** **Quantity** _____

**Original
Chocolate Chip** **Quantity** _____

**GF/DFriendly
BB Chocolate** **Quantity** _____

Total Cookies _____

@\$5.00 Each

Total Amount _____

**We do not encourage door to door, or selling to people you do not know.
You can reach your goal by selling to trusted neighbors and friends!**



www.insideoutcookie.com

Fort Cherry Elementary PTO

Help us earn money with this **EASY** and **DELICIOUS** fundraiser!

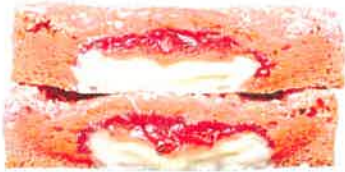
Order sheets are due by:

- April 19th

- Delivery date May 6th

Checks are to be made out to FCEC PTO

- \$5.00 Each
- 4 Inch Diameter
- 5.5 - 6 oz each
- All Natural Ingredients
- No Preservatives
- 20% Less Sugar



**Strawberry
Cheesecake**



**Ultimate
Peanut Butter**



**S'mores Stuffed
Chocolate Chip**



**Salted Caramel
Chocolate Chip**



**Original
Chocolate Chip**



**Brookie
Monster**



**Gluten/Dairy Friendly
Chocolate Chip**



**Gluten/Dairy Friendly
Big Beautiful Chocolate**

**We do not encourage door to door, or selling to people you do not know.
You can reach your goal by selling to trusted neighbors and friends!**



GOT THE SPIRIT? WE WANT TO HEAR IT!

TRYOUTS ARE ABOUT TO START!

The Junior High Cheer tryout practices are April 22-26,
7:30-9:30pm in the HS gym.
Tryout day is April 29th, 3-6pm in the HS gym.
All UPCOMING 7th and 8th graders can try out.
If you are interested in trying out for cheerleading, please attend the
meeting on April 9th during AIRE time in the Fish Bowl .



blueprints

break barriers - build futures
powered by community action



PRE-K COUNTS IS NOW ENROLLING!

Fort Cherry Elementary School
Monday-Friday | 8:15 am - 2:15 pm



Strengthen & Sharpen Minds

Our Pre-K Counts program
focuses on:

- Building a strong foundation for kindergarten
- Helping your child grow academically and socially
- Instilling a love for learning

Contact us today
to apply!

Christal Cunningham
724-225-9550 ext. 457

No cost to families!



pennsylvania
PRE-K COUNTS

We provide a strong foundation
for your child's education.

FORT CHERRY ELEMENTARY CHALKBOARD

~ TO ALL PARENTS ~

The school day at Fort Cherry Elementary starts
at 8:45 a.m.

Students not riding the bus are not permitted to
be dropped off before 8:45 a.m.

**The drop off area for the elementary is the
parking lot by the water tower. DO NOT drop off
students anywhere around the circle or flagpole.**

**DO NOT enter the bus lane (front of school) until
after 9:00 a.m.**





Food Collection

The Fort Cherry School District is collecting canned goods, non-perishable foods, and toiletries for our ***FC Helping Hands Program***. This program provides qualifying Fort Cherry families with monthly boxes of food and self-care items. If you wish to donate, we would greatly appreciate it.

Elementary Drop Off: Fish Bowl/Lobby - buzz and a secretary will accept the donations

Examples of needed items:

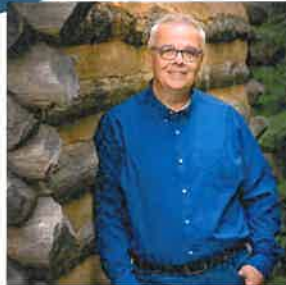
Pasta Noodles
Pasta Sauces
Macaroni & Cheese
Spaghettios
Granola bars
Syrup
Dried fruits
Applesauce
Protein shakes
Breakfast bars
Poptarts
Tissues
Toothpaste
Toothbrushes

Raisins/Craisins
Cereal
Pretzels
Trail Mix
Oatmeal
Crackers
Dental floss
Hand soap
Canned /pouch meats
Peanut Butter
Body wash
Shampoo/conditioner
Band-aids
Peaches

Pears
Fruit cocktail
Mandarin oranges
Applesauce
Corn
Peas
Green beans
Carrots
Popcorn
Rice Cakes
Juice
Lysol Wipes



A Digital World: Youth, Social Media, Sexualized Content, & Mental Health



The Washington Drug and Alcohol Commission is pleased to offer a presentation by Ryan Klingensmith, founder of Shape the Sky. Ryan is a nationally certified counselor who has trained thousands of adults on ways to keep children safe in our digital world. Regarding the use of social media, Ryan comments,

“Our kids have the knowledge to use it, but not the wisdom to stay safe! Adults have the wisdom to handle it, but many lack the knowledge of how it can be used.”

Participants will walk away with the most up to date information and will know what to look for in today’s digital climate. They will learn how to use Ryan’s technology contract to set expectations for youth to help ensure they use technology safely and responsibly.



Date: May 7, 2024

Time: 5:30 - 8:30 PM

Location: Western Area Career & Technology Center
688 Western Ave, Canonsburg, PA 15317

Refreshments will be provided

Seats are limited. Please email barbmo@wdacinc.org or call 724 223 1181 x 113 by April 26, 2024.

Summer Reading Skills PROGRAMS

CLASSES OFFERED IN RICHLAND TOWNSHIP and ON CAMPUS

Program for 4-Year-Olds and Entering Kindergartners

In this fun summer program, your child will learn to read. Children learn letter recognition, beginning phonics, and easy sight words. Your child will learn to read simple words and short sentences and get excited about books and reading.

Program for Entering 1st Graders

In this fun summer program, your child will learn to read independently. Children learn phonics and sight words and build comprehension skills. Your child will develop a love of books and reading and get off to a great start in first grade.

Program for Entering 2nd Graders

In this fun summer program, your child will become a confident, fluent reader. Children build solid phonics skills, develop reading fluency, and improve comprehension. Your child will develop a love of reading and get off to a great start in second grade.

Program for Entering 3rd Graders

In this fun summer program, your child will become a strong, confident reader. Children improve fluency and comprehension, build long-word decoding skills, and expand vocabulary. Your child will develop a love of reading and get off to a great start in third grade.

Programs for Entering 4th and 5th Graders

In these fun single-grade programs, your child will become a skilled, confident reader with strong comprehension in fiction, nonfiction, and textbooks. Students expand their vocabulary and learn to read more fluently and rapidly. As a result, your child will complete homework more quickly and easily, get better grades, and enjoy reading more.

Programs for Entering 6th, 7th, and 8th Graders

In these single-grade programs, your son or daughter will make substantial gains in comprehension and reading speed in fiction, nonfiction, and textbooks. Students expand vocabulary and learn the best way to take notes. As a result, your child will complete homework more quickly and easily, get better grades, and build confidence as a reader.

Programs for Entering 9th and 10th Graders

In these single-grade programs, students learn the skills they need to succeed in high school. Your child will double reading speed and improve comprehension and focus in fiction, textbooks, and nonfiction. Students expand their academic vocabulary and learn study strategies to complete work efficiently, get better grades, and score higher on exams.

Programs for Entering 11th, 12th, and College Freshman

Students learn college-prep skills that help them complete work efficiently and earn better grades and test scores. They double reading speed and improve comprehension, focus, and recall.

FOR MORE INFORMATION OR TO REGISTER

Call 1-800-499-8557

Mon.-Fri. 8am-9pm, Sat. 8am-7pm, and Sun. 10am-6pm

PLEASE SEE REVERSE SIDE FOR CLASS SCHEDULE

chatham[®]
UNIVERSITY

Phonics
Fluency

Comprehension
Love of Reading
Study Skills
Reading Speed

Source Code: 120-14-71169



Teachers

Programs are offered by Chatham University, School of Arts, Science, and Business: Department of Education. Programs are taught by instructors from the Institute of Reading Development.



"I would like to thank you for such a positive outcome with my son James. He learned skills that have translated into wonderful grades, and more importantly, have given him more confidence in his reading abilities. He has actually asked to go to the library to pick out a book!" — Parent of 4th grader



Class Schedule

All programs meet once each week. Tuition varies by grade level. Please ask about our family discount.

Programs meet in **Richland Township (RT)** at Chatham University, Eden Hall Campus, 6035 Ridge Road, and in **Pittsburgh (P)** on campus at Chatham University, Main Campus.

4-Year-Olds & Entering Kindergartners:

Sat. June 15-July 13, 9:00am-10:15am (P)
Mon. June 17-July 15, 9:00am-10:15am (RT)
Sun. July 21-August 18, 9:00am-10:15am (P)

Entering 5th Graders:

Sun. June 16-July 14, 10:45am-12:00pm (P)
Tue. June 18-July 16, 10:45am-12:00pm (RT)
Sat. July 20-August 17, 10:45am-12:00pm (P)

Entering 1st Graders:

Sat. June 15-July 13, 10:45am-12:00pm (P)
Mon. June 17-July 15, 10:45am-12:00pm (RT)
Sun. July 21-August 18, 10:45am-12:00pm (P)

Entering 6th Graders:

Sun. June 16-July 14, 1:00pm-2:15pm (P)
Tue. June 18-July 16, 1:00pm-2:15pm (RT)
Sat. July 20-August 17, 1:00pm-2:15pm (P)

Entering 2nd Graders:

Sat. June 15-July 13, 1:00pm-2:15pm (P)
Mon. June 17-July 15, 1:00pm-2:15pm (RT)
Sun. July 21-August 18, 1:00pm-2:15pm (P)

Entering 7th Graders:

Tue. June 18-July 16, 2:00pm-3:15pm (P)
Tue. June 18-July 16, 2:45pm-4:00pm (RT)

Entering 3rd Graders:

Sat. June 15-July 13, 2:45pm-4:00pm (P)
Mon. June 17-July 15, 2:45pm-4:00pm (RT)
Sun. July 21-August 18, 2:45pm-4:00pm (P)

Entering 8th Graders:

Tue. June 18-July 16, 2:00pm-3:15pm (P)
Tue. June 18-July 16, 2:45pm-4:00pm (RT)

Entering 4th Graders:

Sun. June 16-July 14, 9:00am-10:15am (P)
Tue. June 18-July 16, 9:00am-10:15am (RT)
Sat. July 20-August 17, 9:00am-10:15am (P)

Entering 9th Graders:

Tue. June 18-July 16, 3:45pm-5:00pm (P)

Entering 10th Graders:

Tue. June 18-July 16, 3:45pm-5:00pm (P)

Programs available at other locations and online—call to learn more.

FOR MORE INFORMATION OR TO REGISTER

Call 1-800-499-8557

Mon.-Fri. 8am-9pm, Sat. 8am-7pm, and Sun. 10am-6pm



INQUIRE EARLY! CLASS SIZE IS LIMITED.



THE RONALD MCDONALD CARE MOBILE

As a collaboration between UPMC Children's Hospital of Pittsburgh, and Ronald McDonald House Charities of Pittsburgh and Morgantown, Inc., the Care Mobile offers medical care to children throughout the Pittsburgh region for no out-of-pocket costs.

Have any questions or need more information?

Call 412-352-1059 or visit us at www.chp.edu/our-services/mobile-medical-clinic

Follow and like the Care Mobile on Facebook at www.Facebook.com/CHPCareMobile

SERVICES PROVIDED:

- ▶ Immunizations
- ▶ Routine physical exams
- ▶ Sick child visits
- ▶ Adolescent and young adult health care
- ▶ Referrals for specialty care
- ▶ WIC (Women, Infants & Children) form assistance

THERE ARE NO OUT-OF-POCKET COSTS FOR CARE MOBILE SERVICES.

SERVICES ARE COMING YOUR WAY! LOOK FOR THE CARE MOBILE:

LOCATION: Crossroads Church 1000 Crossroads Dr Oakdale, PA 15071

DATE: April 17, 2024

TIME: 9:30am - 2:00pm

Registration will close at 1:30pm



THANK YOU TO OUR SUPPORTERS

- Armada
- Aldi Giving
- Allegheny County Medical Society Foundation
- Andersen Corporate Foundation
- Bank of America
- G.C. Murphy Co Foundation
- Greater Pittsburgh Community Food Bank
- The Pittsburgh Foundation
- Richard Donchian Foundation
- Walmart Community Grants



McDonald Boro 2024 Summer Tennis Clinics

Harry Collins Tennis Courts — Heritage Park — McDonald, Pennsylvania.

Summer 2024 Tennis Clinic Schedule	
Tuesday, June 11	Thursday, June 13
Tuesday, June 18	Thursday, June 20
Tuesday, June 25	Thursday, June 27
Tuesday, July 9	Thursday, July 11
Tuesday, July 16	Thursday, July 18
Tuesday, July 23	Thursday, July 25
Tuesday, July 30	Thursday, August 1
Tuesday, August 6	Thursday, August 8
*Tuesday, August 13	*Thursday, August 15

There will not be clinics held during the week of June 30-July 6.

*The denoted clinics will be used for make-ups, if necessary.

Clinic Number	Suggested Age Group	Approximate Skill Level	Times
1	5-6 Years Old	Learning to Play Tennis	10:00am – 11:00am
2	7-9 Years Old	Basic Understanding of Fundamental Skills	11:00am – 12:00pm
3	10-12 Years Old	Strong Understanding of Fundamental Skills	12:00pm – 1:00pm
4	13-17 Years Old	Strong Understanding of Skills and Some Understanding of Match Play	2:00pm – 3:30pm
5	High School Prep Class	High School Level Match Experience	3:30pm – 5:00pm
6	18+	Any Previous Tennis Experience	6:00pm – 7:30pm

Cost: \$80 per child, \$40 for each additional child, \$85 per adult, \$125 for clinics 4 & 5 together

Please make checks payable to: **Dane Timmins** (Call or text (412) 997-7066 for more info)

Please cut and send the bottom to **1019 Mayfair Drive, Canonsburg, PA 15317** by **June 1, 2024**.

Name of Participant: _____

Parent/Guardian Name (if applicable): _____

Address: _____

Email Address: _____ Phone Number: _____

Age: _____ Grade Level (if applicable): _____ Please list clinic numbers for participants: _____

Have you previously participated in this program? **Yes** or **No** *If yes, how long? _____

Do you have experience playing tennis? **Yes** or **No**

Signature: _____ Date: _____

FREE Virtual Family/Parent Meeting 2024 Summer Camps



TREES NETWORK

Date: Monday, April 8, 2024

Time: 7:00 PM - 8:00 PM

Location: Live via Google Meets

Camps Attending: Camp Laugh-A-Lot (Washington), Woodlands (Wexford), Open Up (Lawrenceville), Envision Blind Sports (various locations), Hilltop Horizons (Aliquippa), and Longhorn Summer Camp (Mars)



You asked and we heard. The RMU Trees Network has reached out to several camps around the area that are available for kids with disabilities. Come listen and learn about the fun and exciting opportunities these organizations have to offer. They will be providing information on what to expect, benefits of their camp, enrollment, cost, ESY services, etc. They are here because they are the experts and can answer those questions!

To register, contact Vicki Donne at donne@rmu.edu or Deanna Hiltz at hiltzd@rmu.edu or complete this [Registration Form](#)

After you have registered, you will receive a link to the Google Meeting that will be held LIVE on Monday, April 8, 2024.